

PANCO EP193

Romano Marcato | 2019



PANCO

Romano Marcato | 2019



Born in the Italian countryside in the spirit of popular tradition, it shines with equal solidity on the contemporary architecture scene. Majestic, elegant, the PANCO outdoor table is the emblem of sincere and generous conviviality, available from 2025 also in a high version for informal and quick gatherings. The top is made of iroko, warm, lived-in, and durable. The legs are made of steel, and a cut on the side infuses lightness and dynamism. The bench, made of the same materials and retractable under the table, completes the festive atmosphere. Harmony is served, whether with family or friends.

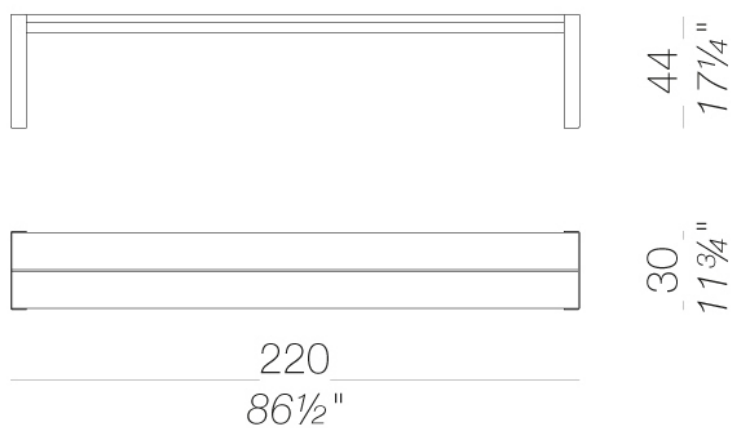


PANCO

Romano Marcato | 2019

EP193 seat in solid Iroko wood 220x30 H44 ☁️

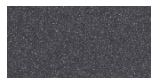
Bench with stainless steel legs Aisi 304 powder coated polyester and seat in solid Iroko wood.



PANCO EP193

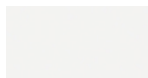
Romano Marcato | 2019

frame



powder coating
anthracite

1 Colors



powder coating
white

1 Colors

seating



wood
iroko

1 Colors

PANCO EP193

Romano Marcato | 2019

consult the folder of materials for the range of colors

use and maintenance instructions

Iroko is a naturally weather-resistant wood, as it is rich in tannins, making it ideal for outdoor use. When exposed to light, the colour gradually darkens and every variation in grain shade from brown, chestnut brown to dark grey are characteristic of this wood type. The presence of different grain patterns, knots and natural imperfections guarantee the naturalness of the wood and do not constitute any grounds for claims. To prolong the life of Iroko components, clean surfaces regularly, dry them with a clean cloth and remove any stagnant water. To prevent drying out of the surface, small cracks and/or the formation of mould, we recommend treating the wood once a year with specific products for the maintenance of solid wood (recommended product "OLTS7" water-based natural oil from www.brava.it).

Do not use detergents containing bleach, hydrochloric acid or products containing chloride on any metal parts. Salt, limescale or acid (from coffee, wine, orange juice, tomato juice, lemon, etc.) may discolour stainless steel parts if they are not promptly cleaned.

Products or parts made of stainless steel used near the sea or in interior fittings of swimming pools require more frequent cleaning to remove chloride deposits and prevent corrosion and chemical attack of the external surface. Stains on stainless steel surfaces must be promptly cleaned. If left for a long time they can become permanent.

To prolong the life of the product, clean the surfaces regularly, dry them with a clean cloth and remove any stagnant water, especially if exposed in locations with a high level of humidity or a marine climate.

When not in use, we recommend storing in sheltered places and covering with waterproof protection. In this case, it is advisable to remove the cover and ventilate the product frequently and regularly to avoid the onset of any mould or stains due to damp.

THE WARRANTY WILL NOT COVER DEFECTS OR IMPERFECTIONS RESULTING FROM THE PASSAGE OF TIME OR TO WEAR AND TEAR DUE TO THE NORMAL USE OF THE PRODUCT.